



THESE DRAWINGS ARE PROPERTY OF THE ARCHITECT. THE DESIGN, SHOWING AND DESCRIPTIONS HEREIN INCLUDING ALL TECHNICAL DRAWINGS AND SPECIFICATIONS ARE THE PROPERTY OF THE ARCHITECT. ANY REVISIONS OR CHANGES TO THE DRAWINGS SHALL BE MADE BY THE ARCHITECT. ANY OTHER PERSONS USING THESE DRAWINGS WITHOUT THE WRITTEN AUTHORIZATION OF THE ARCHITECT SHALL BE RESPONSIBLE FOR ANY DAMAGE TO THE PROJECT OR OTHER PERSONS. THE ARCHITECT ACCEPTS NO LIABILITY FOR ANY DAMAGE TO PERSONS OR PROPERTY INCLUDING PERSONS AND PROPERTY OF ANY KIND ARISING FROM THE USE OF THESE DRAWINGS WITHOUT THE WRITTEN AUTHORIZATION OF THE ARCHITECT.

SUBMITTALS	DATE	DESCRIPTION
PRE-BID:		
BLD'G. DEPT.:	12/30/15	B.D. SUBMITTAL
BID SET:		

RELEASES:	NO.	DATE	DESCRIPTION

ARCH/CONSULTANT:



EXPIRES: 12/31/2017
 01/18/2017

PROJECT

**KANSAS CENTER
 NEW COMMERCIAL/RETAIL
 BUILDING**
 1057 W. MANCHESTER AVE.
 LOS ANGELES, CA. 90044

CLIENT

**SASSONY
 DEVELOPMENT GROUP**

4312 WOODMAN AVENUE
 SUITE 250, SHERMAN OAKS, CA. 91423

REVISIONS

ISSUE	DATE	REVISION
△		
△		
△		
△		
△		
△		

DRAWN _____ CHECKED _____
 TCG

CAD FILE _____

JOB NO.

15.396.00 GE#16008

DATE

9/28/16

SCALE

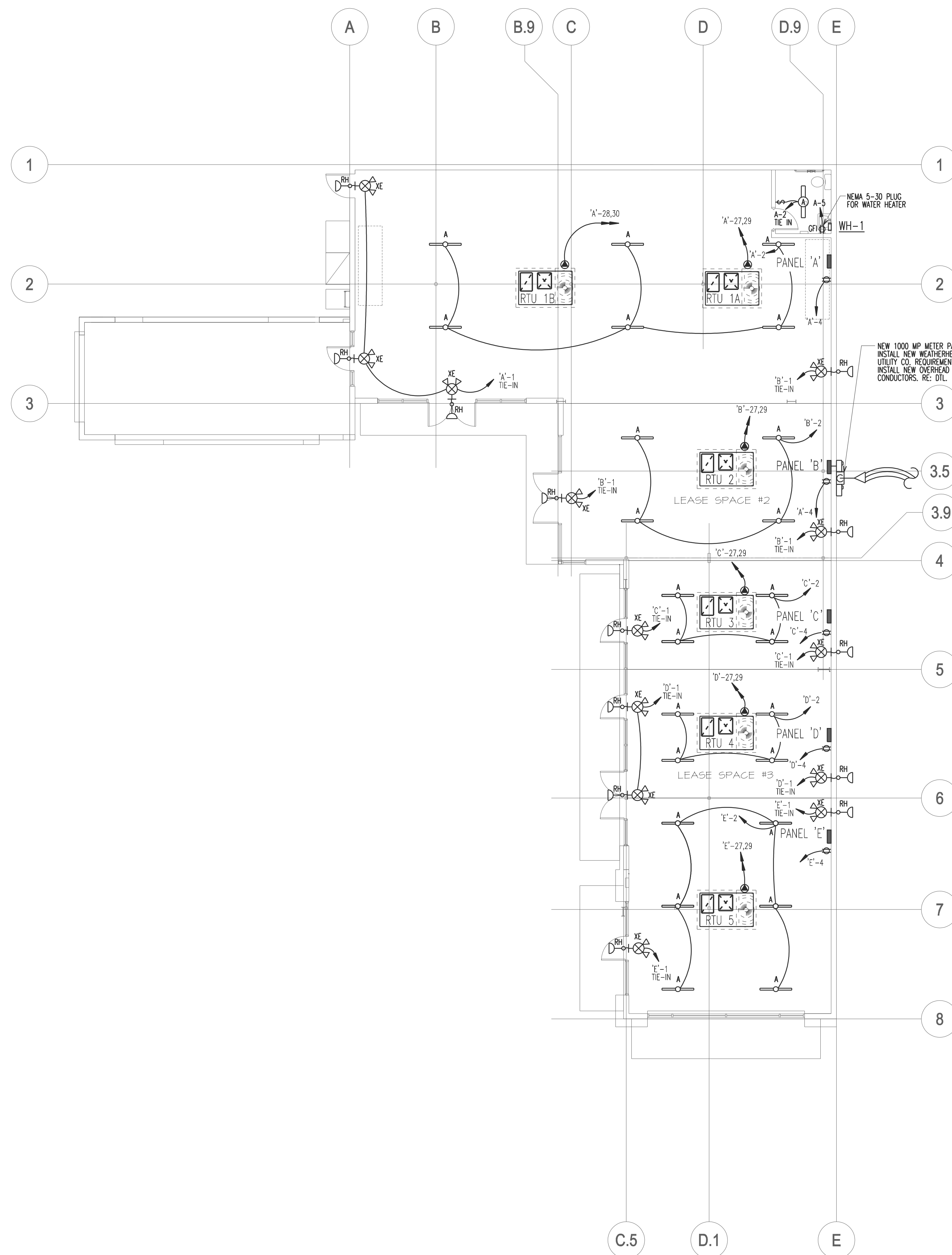
AS SHOWN

TITLE

**ELECTRICAL
 FLOOR PLAN**

SHEET

E-1.0



ELECTRICAL SYMBOLS			
(SYMBOLS APPLY ONLY WHEN USED ON DRAWINGS)			
SYMBOLS	DESCRIPTION		
(A)	FLUORESCENT LIGHTING FIXTURE WITH FIXTURE TYPE.		
⊙/⊙	WALL MOUNTED/CEILING MOUNTED FIXTURE WITH FIXTURE NUMBER		
⊙/⊙	WALL MOUNTED EXIT/CEILING MOUNTED EXIT		
⊙	WALL MOUNTED EMERGENCY LIGHT		
⊙/⊙/⊙	SINGLE POLE/THREE WAY/FOUR WAY TOGGLE SWITCH: 20A, 120/277V		
⊙/⊙/⊙	WALL MOUNTED/CEILING MOUNTED/FLOOR MOUNTED DUPLEX RECEPTACLE: 2P, 3W, 20A, 120V GROUNDING TYPE.		
⊙/⊙/⊙	WALL MOUNTED/CEILING MOUNTED/FLOOR MOUNTED QUADRUPLUX RECEPTACLE: 2P, 3W, 20A, 120V GROUNDING TYPE.		
⊙	240V RECEPTACLE		
⊙	WALL MOUNTED/FLOOR MOUNTED TELEPHONE OUTLET.		
⊙	3/4" EMT TO ABV CEILING TERMINATED WITH PLASTIC BUSHING.		
⊙	WALL MOUNTED/FLOOR MOUNTED TELEPHONE/DATA OUTLET.		
⊙	3/4" EMT TO ABV CLG TERMINATED WITH PLASTIC BUSHING.		
⊙	COAXIAL CABLE ACCESS, 3/4" EMT CONDUIT TO ABV CEILING TERMINATED WITH PLASTIC BUSHING.		
⊙	WALL-MOUNTED THERMOSTAT, 3/4" EMT TO ABV CEILING TERMINATED WITH PLASTIC BUSHING		
⊙	DISCONNECT SWITCH, 30A UNLESS OTHERWISE NOTED, FUSIBLE IF FUSE DESCRIPTION IS SHOWN, VOLTAGE RATING AND NUMBER OF POLES AS REQUIRED.		
⊙	DIRECT CONNECTION TO EQUIPMENT		
⊙	ELECTRIC MOTOR		
⊙	FLUSH-MOUNTED/SURFACE-MOUNTED PANELBOARD		
⊙	WIRING CONCEALED IN CEILING OR WALL.		
⊙	WIRING CONCEALED IN FLOOR.		
⊙	HOME RUN TO PANELBOARD: ONE CIRCUIT PER ARROWHEAD AS SHOWN, CONNECT TO CIRCUIT AS LABELED.		
⊙	JUNCTION BOX		
⊙	TAMPER SWITCH/FLOW SWITCH		
⊙	SMOKE DETECTOR WITH SOUNDER BASE		
ABBREVIATIONS AND SUBSCRIPTS			
AC	AC ABOVE COUNTER	N	NEUTRAL
C	CONDUIT	N.T.S.	NOT TO SCALE
EW	ELECTRIC WATER COOLER	T.S.	TIME SWITCH
FUT	FUTURE	TMB	TELEPHONE MOUNTING BOARD
GFI	GROUND FAULT INTERRUPTER	TYP.	TYPICAL
GR	GROUND	UC	UNDER COUNTER
HD	HAND DRYER	UH	UNIT HEATER
IG	ISOLATED GROUND	W	WIRE
MDP	MAIN DISTRIBUTION PANEL	WH	WATER HEATER
MSB	MAIN SWITCHBOARD	WP	WEATHERPROOF

LIGHT FIXTURE SCHEDULE							
SYMBOL	MARK	MANUFACTURER CATALOG NO.	VOLTS	QTY.-WATTS TYPE	ORDERING CODE	MOUNTING	FIXTURE NOTES
⊙	A	LITHONIA C-232-1M0LT-GE810S-18CONST-HC36	120	(4)32W FLUOR	F3218/840/WM	CHAIN HUNG	4" STRIP LIGHT W/WIREGUARD 12,2,3,5
⊙	RH	LITHONIA ELA-Q-10309	120	AS REQ'D FOR MANUFACTURER		STRUCTURE UNIVERSAL	EXTERIOR LED EMERGENCY EGRESS 5
⊙	XE	LITHONIA LHM-LED-R-HO	120	AS REQ'D FOR MANUFACTURER		UNIVERSAL WALL/CEILING	EXIT W/LIGHT HEADS EMERGENCY 5

NOTES:
 1. ALL FLUORESCENT LAMPS SHALL BE GENERAL ELECTRIC "WATT WISER, SYLVANIA "SUPER SAVER", OR WESTINGHOUSE "ECONOWATT", COLOR: COOL WHITE.
 2. BALLASTS SHALL BE BY MOTOROLA ELECTRONIC MODEL M9A18T1120 OR EQUAL.
 3. ALL FIXTURES SHALL BE PAINTED AFTER FABRICATION. FINISHED INTERIOR HOUSING SHALL HAVE A REFLECTANCE OF 90%.
 4. FIXTURE WITH EMERGENCY BALLAST
 5. MANUFACTURERS AND MODEL NUMBERS LISTED ABOVE ARE TO BE VIEWED AS A STANDARD. SEE LIST BELOW FOR APPROVED MANUFACTURERS.

NOTES:
 WHEN SUBSTITUTING FIXTURES WITH AN APPROVED MANUFACTURER, THE FIXTURE MUST BE EQUAL TO OR BETTER THAN THE ONE SCHEDULED. PROVIDE CUT SHEETS UPON REQUEST.
 LIGHTING FIXTURES TO BE PROVIDED WITH ACCESSORIES FOR A COMPLETE ASSEMBLY, INCLUDING HARDWARE. FINISHES NOT SPECIFIED ARE TO BE OBTAINED FROM THE OWNER AND DOCUMENTED ON SUBMITTALS IF REQUESTED.

1 Electrical Floor Plan
 1/8"=1'-0"



THESE DRAWINGS ARE PROPERTY OF THE ARCHITECT. THE DESIGN SHOWN AND DESCRIBED HEREIN INCLUDING ALL TECHNICAL DRAWINGS ARE PROPRIETARY AND CHANGE BE. COPIED, REPRODUCED OR COMMERCIALY EXPLOITED IN WHOLE OR IN PART. THE DRAWING AND SPECIFICATIONS SHALL NOT BE USED BY THE OWNER OR OTHER PROJECTS FOR ANY OTHER PROJECTS OR FOR ANY OTHER PURPOSES AND THESE INCLUDING REVISIONS ARE NOT TO BE USED FOR ANY OTHER PROJECTS WITHOUT THE WRITTEN AUTHORIZATION OF THE ARCHITECT.

NO.	DATE	DESCRIPTION

ARCH/CONSULTANT:
 PROJECT
**KANSAS CENTER
 NEW COMMERCIAL/RETAIL
 BUILDING**
 1057 W. MANCHESTER AVE.
 LOS ANGELES, CA. 90044

CLIENT
**SASSONY
 DEVELOPMENT GROUP**
 4312 WOODMAN AVENUE
 SUITE 250, SHERMAN OAKS, CA. 91423

ISSUE	DATE	REVISION

DRAWN _____ CHECKED _____
 TCG

CAD FILE _____

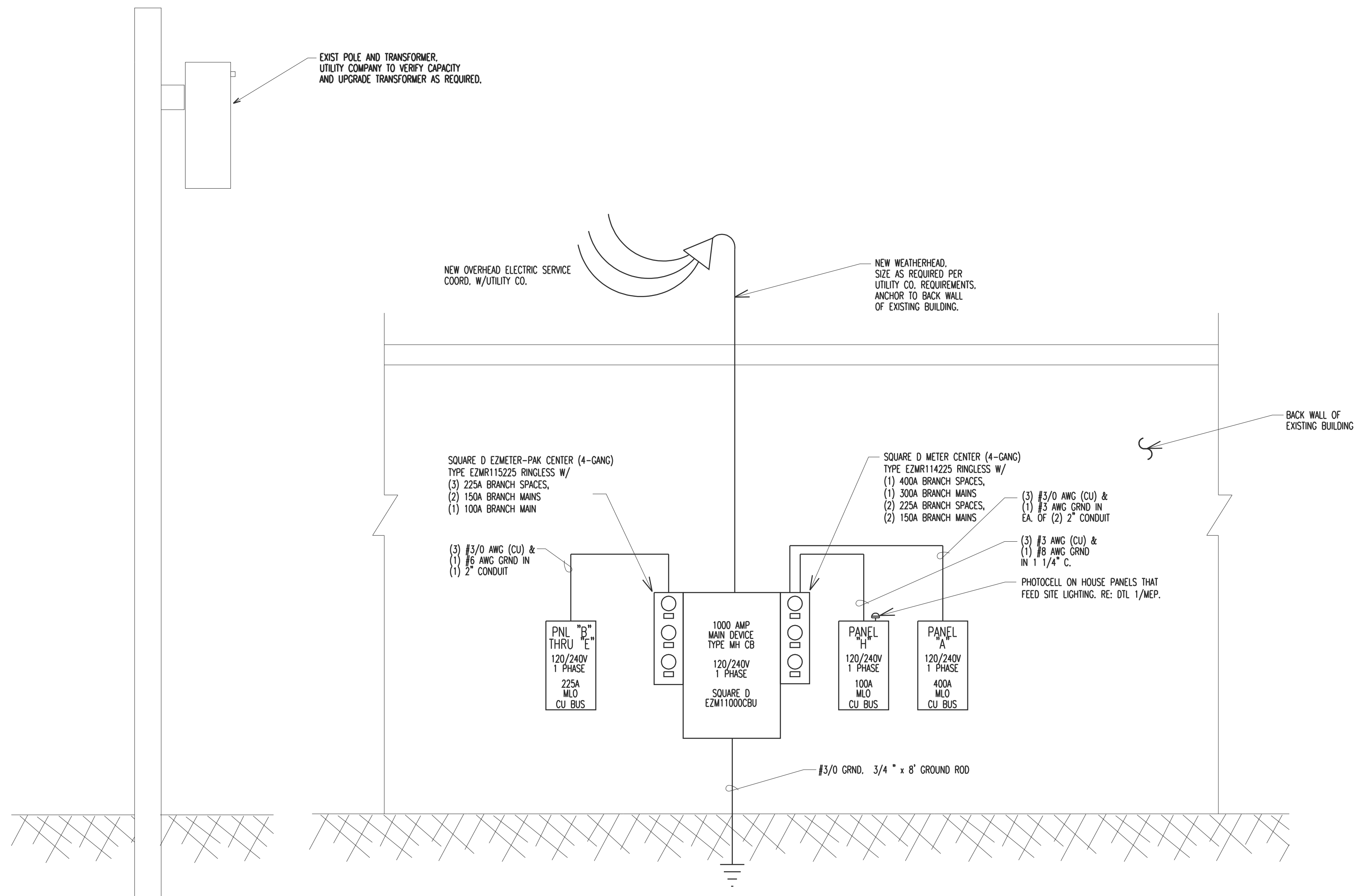
JOB NO.
 15.396.00 GE#16008

DATE
 9/28/16

SCALE
 AS SHOWN

TITLE
**ELECTRICAL RISER
 DIAGRAM & PANEL
 SCHEDULES**

SHEET
E3.0



1 Electrical Riser Diagram
 No Scale

KANSAS CORNER BLDG. RENOV. - LOS ANGELES, CA		PANEL "H"		A.I.C. BREAKER MINIMUM 10,000							
MAIN BRKR FRAME	100	MAIN BREAKER AMPS	MLO SIZE	100	TYPE SQUARE "D" - NQ CU BUS						
VOLTAGE	120/240	PHASE	SINGLE	THREE	MOUNTING SURFACE						
DESCRIPTION	A	B	WIRE SIZE	NO. OF W'S	P O L E NO. CT. NO.	T R I P NO. CT. NO.	NO. OF WIRE	A	B	DESCRIPTION	
SITE LIGHTING	780		12	2	1	20	1			SITE LIGHTING	
SITE LIGHTING		900	12	2	1	20	3			SITE LIGHTING	
SPARE					1	20	5			SPARE	
SPARE					1	20	7			SPARE	
SPARE					1	20	9			SPARE	
SPARE					1	20	11			SPARE	
SPARE					1	20	13			SPARE	
SPARE					1	20	15			SPARE	
SPARE					1	20	17			SPARE	
SPARE					1	20	19			SPARE	
LIGHTS@125% =	4,350	VA	RECEPTACLES =	0	VA	HVAC@100% =	0	VA	EQUIPMENT@100% =	0	VA
VA'S TOTAL =	4,350	VA	A PHASE =	1,680	VA	B PHASE =	1,800	VA			
AMPS TOTAL =	18		A PHASE =	14		B PHASE =	15				

KANSAS CORNER BLDG. RENOV. - LOS ANGELES, CA		PANEL "A"		A.I.C. BREAKER MINIMUM 10,000							
MAIN BRKR FRAME	400	MAIN BREAKER AMPS	MLO SIZE	400	TYPE SQUARE "D" - NQ CU BUS						
VOLTAGE	120/240	PHASE	SINGLE	THREE	MOUNTING SURFACE						
DESCRIPTION	A	B	WIRE SIZE	NO. OF W'S	P O L E NO. CT. NO.	T R I P NO. CT. NO.	NO. OF WIRE	A	B	DESCRIPTION	
LTS EGRESS	500		12	2	1	20	1			LTS GENERAL	
RECEPTACLES		900	12	2	1	20	3			RECEPTACLES	
WATER HEATER		3000	10	2	1	25	5			SPARE	
SPARE					1	20	7			SPARE	
SPARE					1	20	9			SPARE	
SPARE					1	20	11			SPARE	
SPARE					1	20	13			SPARE	
SPARE					1	20	15			SPARE	
SPARE					1	20	17			SPARE	
SPARE					1	20	19			SPARE	
SPARE					1	20	21			SPARE	
SPARE					1	20	23			SPARE	
SPARE					1	20	25			SPARE	
RTU-1A		4560	8	2	2	50	27			4560	
RTU-1B		4560	8	2	2	50	27			4560	
LIGHTS@125% =	1,750	VA	RECEPTACLES =	1,800	VA	HVAC@100% =	18,240	VA	EQUIPMENT@100% =	3,000	VA
VA'S TOTAL =	24,790	VA	A PHASE =	13,520	VA	B PHASE =	10,920	VA			
AMPS TOTAL =	103		A PHASE =	113		B PHASE =	91				

KANSAS CORNER BLDG. RENOV. - LOS ANGELES, CA		PANEL "B THRU E"		A.I.C. BREAKER MINIMUM 10,000							
MAIN BRKR FRAME	200	MAIN BREAKER AMPS	MLO SIZE	225	TYPE SQUARE "D" - NQ CU BUS						
VOLTAGE	120/240	PHASE	SINGLE	THREE	MOUNTING SURFACE						
DESCRIPTION	A	B	WIRE SIZE	NO. OF W'S	P O L E NO. CT. NO.	T R I P NO. CT. NO.	NO. OF WIRE	A	B	DESCRIPTION	
LTS EGRESS	780		12	2	1	20	1			LIGHTS GENERAL	
RECEPTACLES		900	12	2	1	20	3			RECEPTACLES	
SPARE					1	20	5			SPARE	
SPARE					1	20	7			SPARE	
SPARE					1	20	9			SPARE	
SPARE					1	20	11			SPARE	
SPARE					1	20	13			SPARE	
SPARE					1	20	15			SPARE	
SPARE					1	20	17			SPARE	
SPARE					1	20	19			SPARE	
SPARE					1	20	21			SPARE	
SPARE					1	20	23			SPARE	
SPARE					1	20	25			SPARE	
RTU-2 THRU RTU-5		4560	8	2	2	50	27			4560	
LIGHTS@125% =	2,100	VA	RECEPTACLES =	1,800	VA	HVAC@100% =	9,120	VA	EQUIPMENT@100% =	0	VA
VA'S TOTAL =	13,020	VA	A PHASE =	6,240	VA	B PHASE =	6,360	VA			
AMPS TOTAL =	54		A PHASE =	52		B PHASE =	53				



THESE DRAWINGS ARE PROPERTY OF THE ARCHITECT. THE DESIGN, SHOWING AND DESCRIPTIONS HEREIN INCLUDING ALL TECHNICAL DRAWINGS AND SPECIFICATIONS SHALL BE USED BY THE OWNER OR OTHERS ONLY FOR THE PROJECT AND SHALL NOT BE REPRODUCED OR TRANSMITTED IN ANY FORM OR BY ANY MEANS, INCLUDING PHOTOCOPYING, RECORDING, OR BY ANY INFORMATION STORAGE AND RETRIEVAL SYSTEM, WITHOUT THE WRITTEN AUTHORIZATION OF THE ARCHITECT.

SUBMITTALS	DATE	DESCRIPTION
PRE-BID:		
BLD'G. DEPT.:	12/30/15	B.D. SUBMITTAL
BID SET:		

RELEASES:	NO.	DATE	DESCRIPTION

ARCH/CONSULTANT:

 EXPIRES: 12/31/2017
 01/18/2017

PROJECT
**KANSAS CENTER
 NEW COMMERCIAL/RETAIL
 BUILDING**
 1057 W. MANCHESTER AVE.
 LOS ANGELES, CA. 90044

CLIENT
**SASSONY
 DEVELOPMENT GROUP**
 4312 WOODMAN AVENUE
 SUITE 250, SHERMAN OAKS, CA. 91423

REVISIONS	ISSUE	DATE	REVISION

DRAWN _____ CHECKED _____
TCG **TCG**

CAD FILE _____

JOB NO.
15.396.00 **GE#16008**

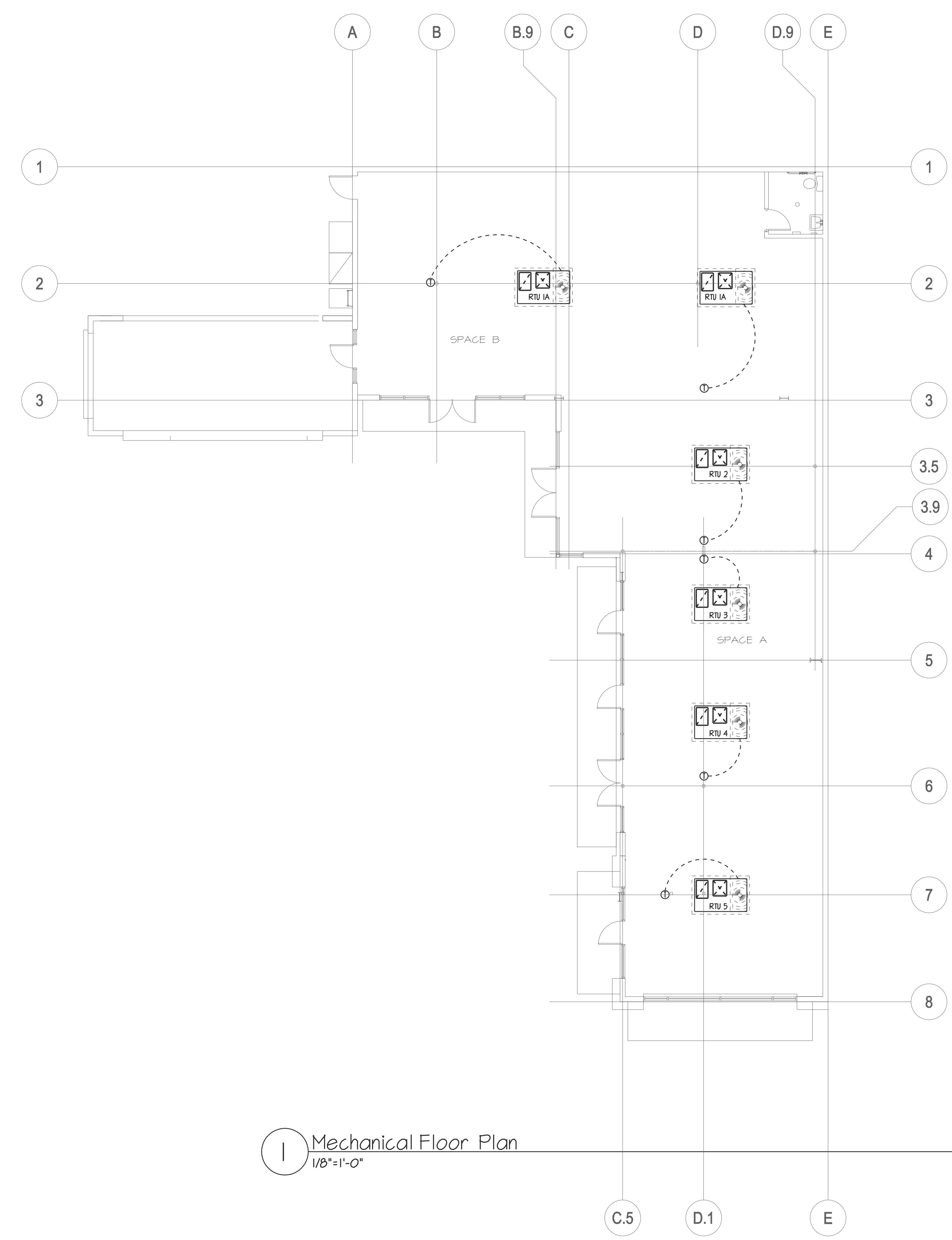
DATE
9/28/16

SCALE
AS SHOWN

TITLE
**MECHANICAL
 FLOOR PLAN**

SHEET

M-1.0



1 Mechanical Floor Plan
 1/8"=1'-0"

MECHANICAL SYMBOLS LEGEND			
(SYMBOLS APPLY ONLY WHEN USED ON DRAWINGS)			
	SQUARE CEILING SUPPLY AIR DIFFUSER		CONTROL VALVE
	ROUND CEILING SUPPLY AIR DIFFUSER		MOTORIZED DAMPER (ROUND/REC.DUCT)
	RECTANGULAR CEILING AIR DIFFUSER		MANUAL VOLUME DAMPER
	RETURN OR EXHAUST AIR GRILLE		ZONE DAMPER / BYPASS DAMPER
	AIR FLOW DIRECTION		COMBINATION FIRE / SMOKE DAMPER
	ROOF MOUNT. EXHAUST FAN		FIRE DAMPER
	BRANCH DUCT TAKEOFF W/ MANUAL DAMPER		CROSS-SECTION SUPPLY AIR DUCT
	DRAIN		CROSS-SECTION RETURN AIR DUCT
	T-STAT / CO2 SENS. / SMOKE DETEC. / SWITCH		TURNING VANES
	DUCT SMOKE DETECTOR		FLEXIBLE CONNECTION
			FLEXIBLE DUCT
			RECTANGULAR MANUAL BALANCING DAMPER
			ROUND MANUAL BALANCING DAMPER
			SPLITTER / DAMPER

ROOFTOP HEATPUMP UNIT SCHEDULE													
MARK	AREA SERVED	UNIT TYPE/MAN. HEAT TYPE MODEL NUMBER	COOLING COIL			HEAT PUMP HEATING @ 40°F		EER COP	FAN CFM ESP HP	ELEC. HEAT KW	MCA MOCP	V PH HZ	ACCESS. NOTES
WEIGHT			TOTAL (MBH)	SENS. (MBH)	OSA (CFM)								
RTU-1A	RETAIL SPACE #1	3 TON YORK XPO38E01D2U154	45.5	30.2	300	28.0	11.4	1200 0.1" 5	3.30	15 KW	48.0 50	240 1 60	ABC,DEF,G 1,2,3
RTU-1B	RETAIL SPACE #1	4 TON YORK XPC48E01D0U154	94.0	68.1	400	32.4	11.0	1600 0.1" 5	3.20	15 KW	48.0 50	240 1 60	ABC,DEF,G 1,2,3
RTU-2*	RETAIL SPACE #2	3 TON YORK XPO38E01D2U154	45.5	30.2	300	28.0	11.4	1200 0.1" 5	3.30	15 KW	48.0 50	240 1 60	ABC,DEF,G 1,2,3
RTU-3*	RETAIL SPACE #3	3 TON YORK XPO38E10B2U155	40.5	25.4	200	26.8	11.4	900 0.1" 5	3.30	15 KW	48.0 50	240 1 60	ABC,DEF,G,H 1,2,3,4
RTU-4*	RETAIL SPACE #4	3 TON YORK XPO38E10B2U155	40.5	25.4	200	26.8	11.4	900 0.1" 5	3.30	15 KW	48.0 50	240 1 60	ABC,DEF,G 1,2,3
RTU-5*	RETAIL SPACE #5	3 TON YORK XPO38E01D2U154	45.5	30.2	300	28.0	11.4	1200 0.1" 5	3.30	15 KW	48.0 50	240 1 60	ABC,DEF,G 1,2,3

ACCESSORIES:
 A. 110 VOLT (POWERED) WATERPROOF CONVENIENCE OUTLET - SMOKE DETECTORS PER LOCAL CODE BY CONTRACTOR.
 B. PROGRAMMABLE THERMOSTAT, 1 DAY ON-OFF-AUTO FAN SWITCH/HEAT-COOL.
 C. PROVIDE DIRECT DRIVE BLOWER.
 D. PROVIDE 1" CURB WITH ROOFTOP UNIT, MECHANICAL CONTRACTOR TO FURNISH AND INSTALL.
 E. PROVIDE FACTORY TECHNICIATED CONDENSER COILS.
 F. PROVIDE FACTORY INSTALLED UNIT CONTROL PANEL W/ DISCONNECT SWITCH.
 G. PROVIDE MOTORIZED OUTSIDE AIR DAMPER (0%-25% RANGE).

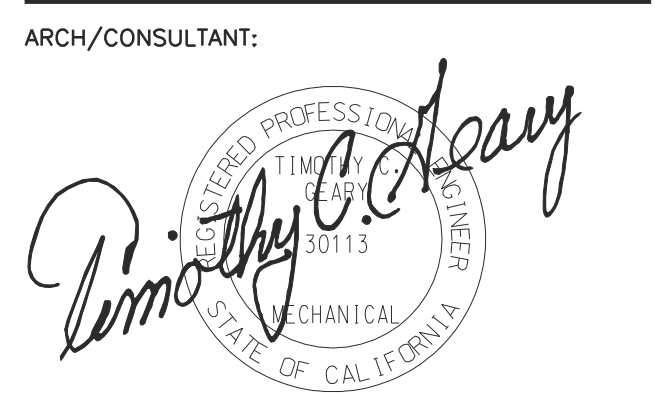
ROOFTOP UNIT NOTES:
 1. COOLING CAPACITY BASED ON 80°F DB/67°F WB EVAPORATOR COIL ENTERING AIR TEMPERATURE W/ 45°F AMBIENT TEMPERATURE.
 2. IN HIGH HUMIDITY AREAS WHERE ECONOMIZERS ARE NOT RECOMMENDED, MOTORIZED DAMPERS SHOULD BE UTILIZED IN ORDER TO MEET FRESH AIR REQUIREMENT.
 3. PROVIDE AUTOMATIC SHUT-OFF FOR MECHANICAL SYSTEMS UPON DETECTION OF SMOKE BY DETECTORS IN SUPPLY AIR DUCTS FOR AIR SYSTEMS ACCORDING TO CMC SECTION 609.



THESE DRAWINGS ARE PROPERTY OF THE ARCHITECT. THE DESIGN, SPECIFICATIONS, AND CONDITIONS OF CONTRACT ARE HEREBY INCORPORATED BY REFERENCE. NO PART OF THESE DRAWINGS SHALL BE REPRODUCED OR TRANSMITTED IN ANY FORM OR BY ANY MEANS, ELECTRONIC OR MECHANICAL, INCLUDING PHOTOCOPYING, RECORDING, OR BY ANY INFORMATION STORAGE AND RETRIEVAL SYSTEM, WITHOUT THE WRITTEN PERMISSION OF THE ARCHITECT.

SUBMITTALS	DATE	DESCRIPTION
PRE-BID:		
BLD'G. DEPT.:	12/30/15	B.D. SUBMITTAL
BID SET:		

RELEASES:	NO.	DATE	DESCRIPTION
	1.		
	2.		
	3.		



EXPIRES: 12/31/2017
 01/18/2017

PROJECT
**KANSAS CENTER
 NEW COMMERCIAL/RETAIL
 BUILDING**
 1057 W. MANCHESTER AVE.
 LOS ANGELES, CA. 90044

CLIENT
**SASSONY
 DEVELOPMENT GROUP**
 4312 WOODMAN AVENUE
 SUITE 250, SHERMAN OAKS, CA. 91423

REVISIONS	ISSUE	DATE	REVISION
1			
2			
3			
4			
5			
6			
7			
8			

DRAWN: JMH CHECKED: TCG

CAD FILE

JOB NO.
 15.396.00 GE#16008

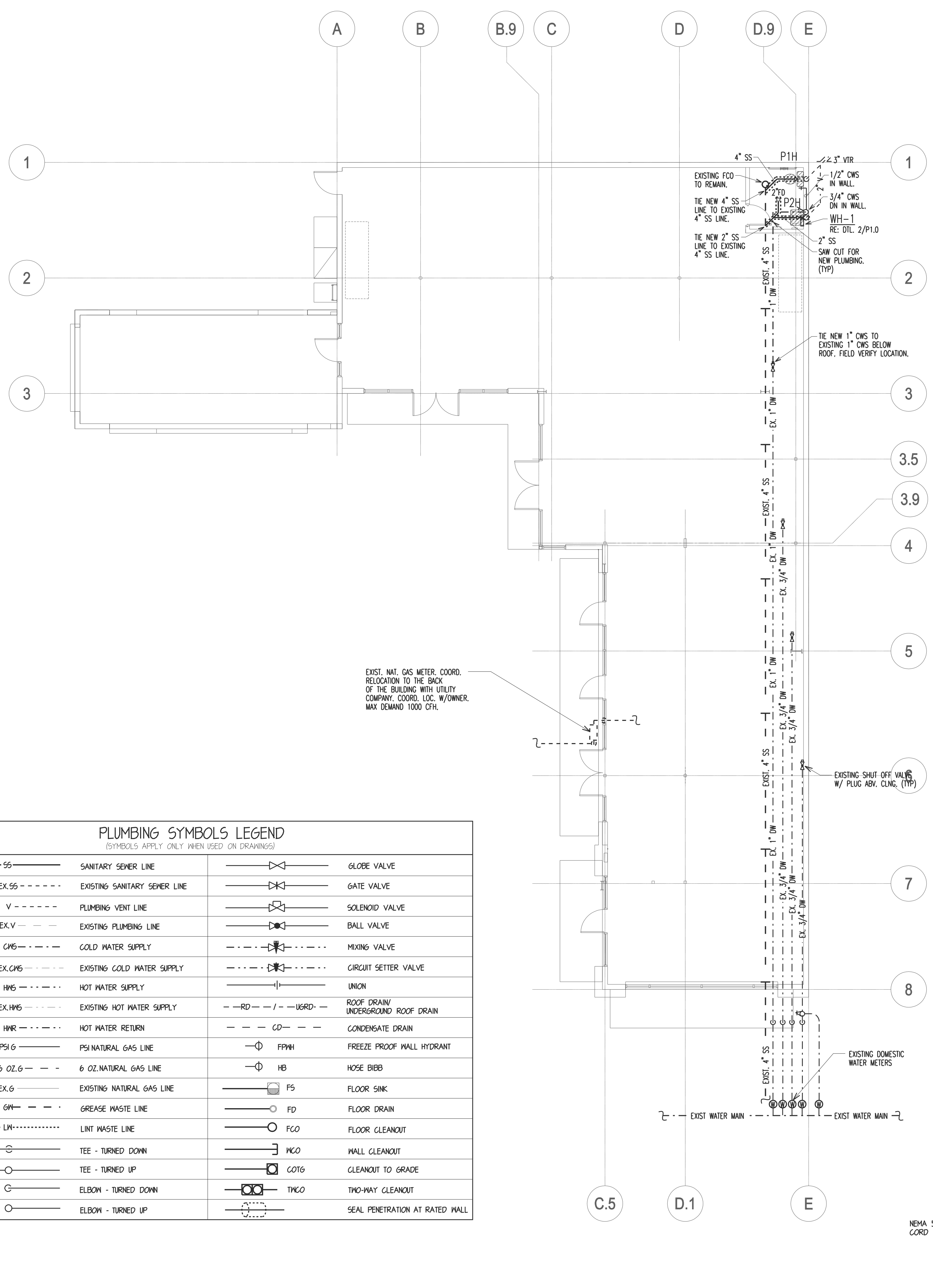
DATE
 9/28/16

SCALE
 AS SHOWN

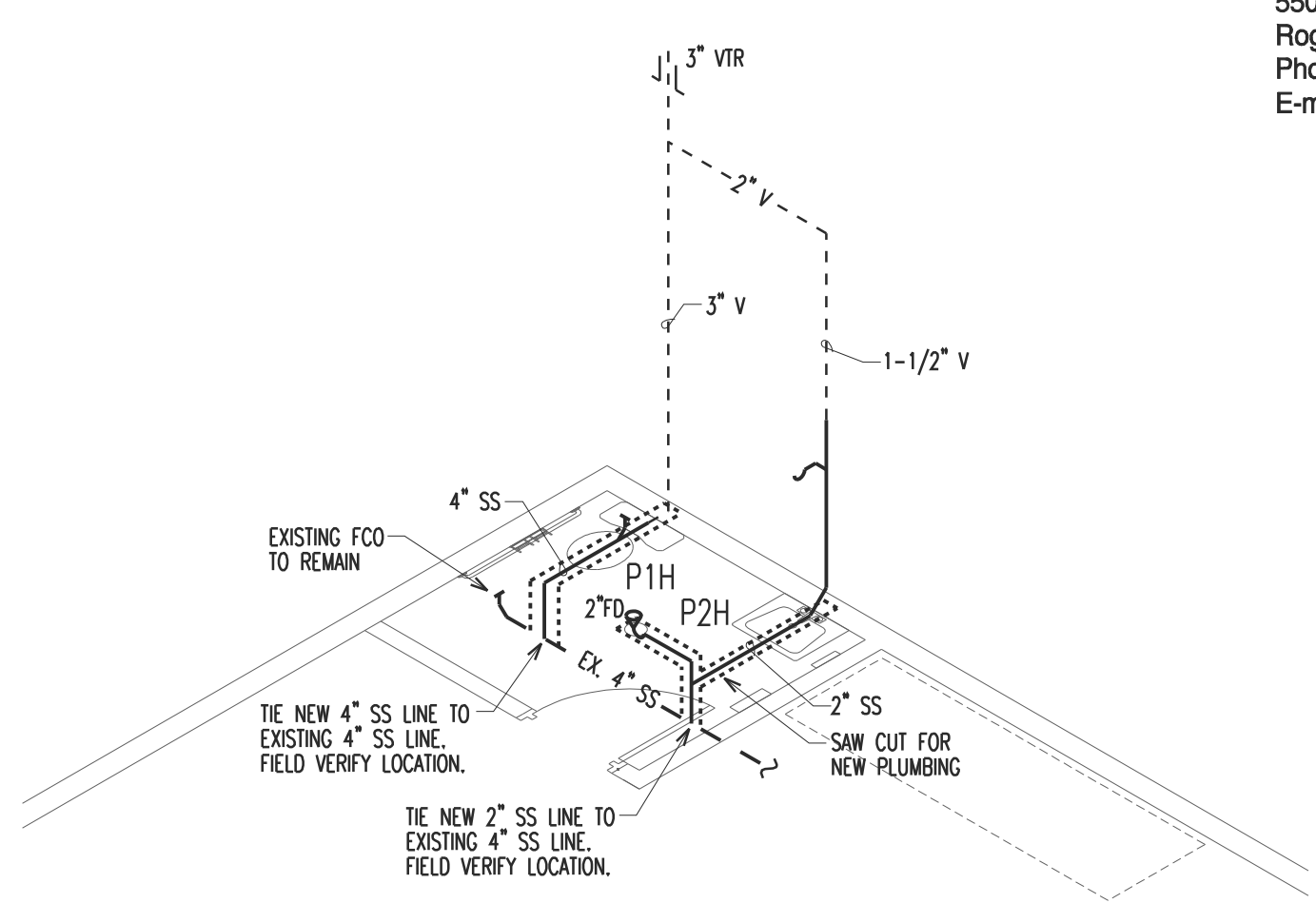
TITLE
**PLUMBING, WATER
 PIPING, RISER DIAGRAM
 PLAN, SCHEDULES &
 DETAILS**

SHEET

P-1.0



2 Waste & Vent Riser Diagram
 1/8"=1'-0"



MARK	DESCRIPTION	HOT	COLD	WASTE	VENT
P1H	WATER CLOSET (TANK TYPE)	---	1/2"	4"	2"
P2H	WALL MOUNT LAVATORY	1/2"	1/2"	2"	1-1/2"

FIXTURE / ACCESSORY	DIM.	REMARKS
TOILET SEATS (STANDARD)	14"	15" TO RIM MAX.
TOILET SEATS (ACCESSIBLE)	17"	19" TOP OF SEAT MAX.
LAVATORIES (STANDARD)	34"	TO TOP OF FRONT RIM
LAVATORIES (ACCESSIBLE)	34"	TO TOP OF FRONT RIM

MARK	FIXTURE	MANUFTR.	CATALOG	TRIM	IN	OUT	RELIEF
WH-1	WATER HEATER	EEMAX	SP3012	ELECTRIC TANKLESS WATER HEATER W/120V/3.0KW/25A	1/2"	1/2"	3/4"

NOTES:
 1. WALL MOUNTED.
 2. ELECTRIC.
 3. MANUFACTURER & MODEL NUMBERS LISTED ARE TO REPRESENT A STANDARD APPROVED MANUFACTURER ARE NAVIEN, A.O. SMITH, LOGAN, NATIONAL, RUID, EEMAX, OR STATE.
 4. ALL EXPOSED WATER PIPING SHALL BE INSULATED W/ ARMBROSTRONG ARMAFLEX 1/2" THICK INSULATION THRU 3/4" IN SIZE. PROVIDE 3/4" THICK INSULATION 1" SIZE PIPE & LARGER. TAPE ALL JOINTS.

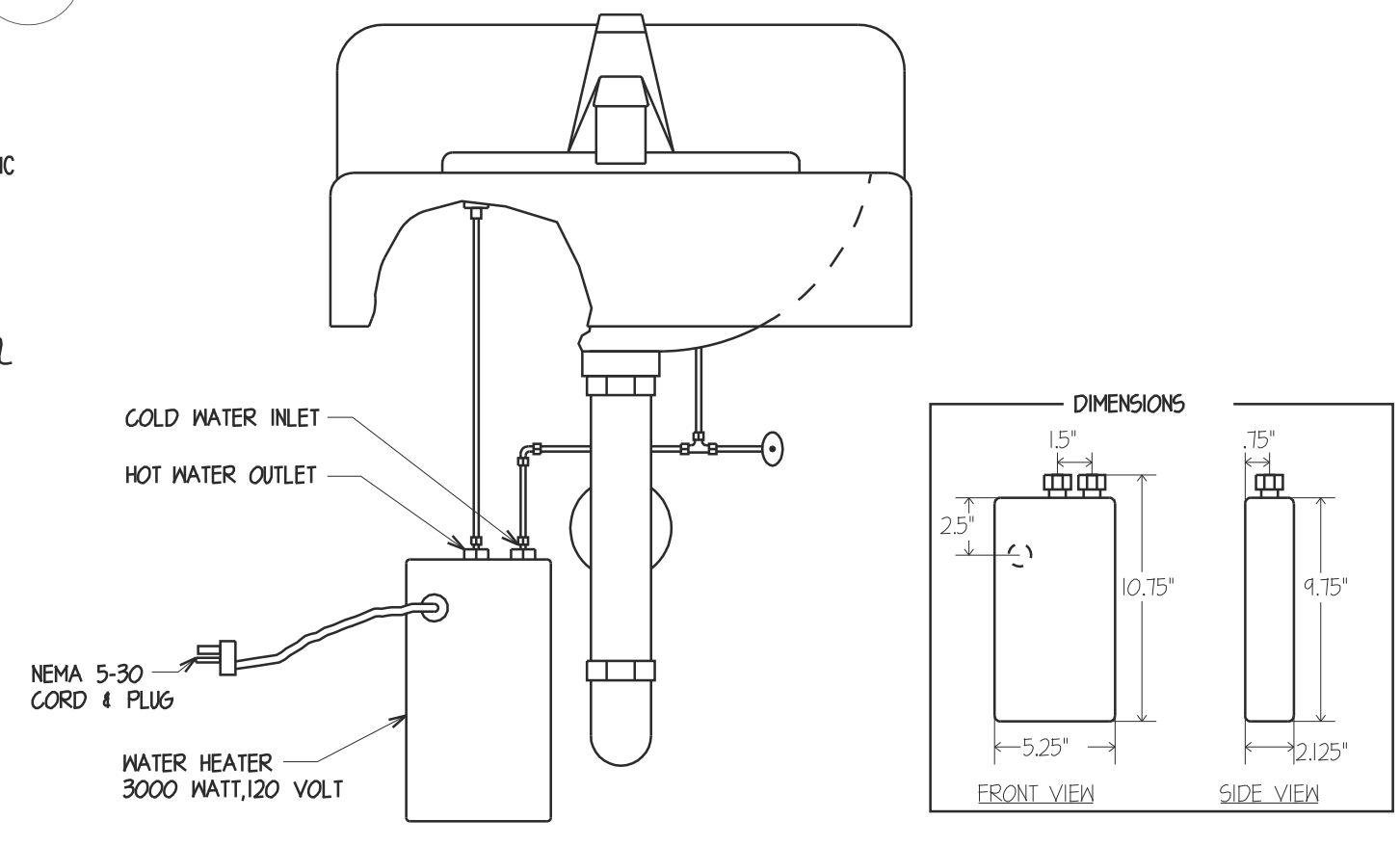
MARK	FIXTURE	MANUFACTURER	CATALOG	TRIM
P1H	TANK TYPE WATER CLOSET HANDICAPPED	AMERICAN STANDARD	CADET 295AA.004	OLSONITE 1001 SEAT W/O COVER & BRASS CRAFT 3/8" ANGLE SUPPLY. THE FLUSH LEVER SHALL BE LOCATED ON THE NON-GRAB BAR SIDE OF THE WATER CLOSET.
P2H	WALL MOUNT LAVATORY HANDICAPPED	AMERICAN STANDARD	LUCERNE 0255.012	W/ AMERICAN STANDARD HERITAGE 1402.000.012H FAUCET W/ BRIST BLADE HANDLES, 1-1/4" MCGUIRE 159C OFFSET LAVATORY GRID STRAINER, MCGUIRE 1-1/4" 8012 P-TRAP W/ CLEANOUT, BRASS CRAFT 3/8" ANGLE SUPPLY & J.R. SMITH 100 CONCEALED LAVATORY ARM CARRIER. INSTALL P-TRAP AGAINST R/L WALL. INSULATE ALL EXPOSED DRAIN & WATER PIPING UNDER LAVATORY PER ADA REQUIREMENTS W/ TREBRO MODEL #102.

NOTES:
 A. PLUMBING FIXTURES, ACCESSORIES, & INSTALLATION SHALL MEET ALL FEDERAL, STATE, ADA, & LOCAL CODE REQUIREMENTS.
 B. VERIFY FIXTURES WITH OWNER BEFORE ORDERING.
 C. CLEAN OUTS TO BE OF THE SAME SIZE AS PIPING SERVED.
 D. CONTRACTOR SHALL HAVE THE OPTION TO SUBSTITUTE EQUAL FIXTURES IF APPROVED BY ARCHITECT.
 E. VERIFY REQUIREMENT FOR RIGHT HAND & LEFT HAND WATER CLOSET BEFORE ORDERING FIXTURE.
 F. ALL EXPOSED PIPING UNDER LAVATORIES & SINKS SHALL BE COVERED W/ HAND-LAY-GUARD BY TREBRO INDUSTRIES, OR EQUAL TO MEET H.C. CODES.
 G. ALL FIXTURES SHALL BE WHITE IN COLOR.
 H. ALL FIXTURES SHALL BE COMPLETE W/ ALL NECESSARY FITTINGS, ANGLES, STOPS, CARRIERS, ETC.

GENERAL PLUMBING NOTES

- FURNISH ALL MATERIALS, FITTINGS, AND EQUIPMENT REQUIRED FOR A COMPLETE INSTALLATION OF THE SYSTEM DESCRIBED HEREIN AND OR SHOWN IN THE DRAWINGS. THE SYSTEMS SHALL INCLUDE DOMESTIC COLD AND HOT WATER PIPING SYSTEMS, GAS PIPING SYSTEM, PLUMBING FIXTURES, AND INSTALLATION.
- ALL PLUMBING MATERIALS AND INSTALLATION SHALL BE IN ACCORDANCE WITH ALL APPLICABLE CODES AND REGULATIONS.
- COORDINATE WORK WITH ALL OTHER TRADES AND DRAWINGS TO DETERMINE INTERFACE REQUIREMENTS NECESSARY TO PROPERLY INTEGRATE ALL MAJOR BUILDING SYSTEMS: MECHANICAL, PLUMBING, ELECTRICAL, LOW-VOLTAGE, AND SPRINKLER SYSTEMS.
- THE DRAWINGS ARE SCHEMATIC ONLY AND THE CONTRACTOR SHALL MAKE ADJUSTMENTS FOR SPACE REQUIREMENTS AND CONFLICTS WITH OTHER TRADES AND SHALL OBTAIN APPROVAL FROM THE ARCHITECT FOR ANY VARIATION FROM THE INDICATED LOCATIONS.
- SITE UTILITIES ARE SHOWN IN APPROXIMATE LOCATIONS FROM EXISTING MAPS AND DRAWINGS; HOWEVER, THE CONTRACTOR SHALL EXAMINE THE SITE AND VERIFY TO HIS OWN SATISFACTION THE LOCATIONS AND ELEVATIONS OF ALL UTILITIES AND SHALL ADEQUATELY INFORM HIMSELF OF THEIR RELATION TO HIS WORK. VERIFY LOCATION OF WATER METER WITH LOCAL WATER SERVICE COMPANY.
- ALL EQUIPMENT AND SYSTEMS CALLED FOR SHALL BE INSTALLED BY EXPERIENCED CRAFTSMEN AND SHALL INCLUDE ALL NECESSARY DEVICES, APPURTENANCE AND EQUIPMENT FOR A COMPLETE WORKABLE SYSTEM. ALL SYSTEMS AND EQUIPMENT SHALL BE GUARANTEED AND FREE FROM DEFECTS IN MATERIAL AND WORKMANSHIP FOR THE TIME PERIODS OF GUARANTEE AS SPECIFICALLY CALLED FOR OR FOR A MINIMUM TIME OF ONE YEAR WHERE NO TIME LIMIT IS SET FORTH.
- AT COMPLETION OF THE JOB, THE CONTRACTOR SHALL PROVIDE THE OWNER WITH A SET OF OPERATING AND MAINTENANCE INSTRUCTIONS FOR ALL EQUIPMENT AND SHALL INSTRUCT OWNER'S MAINTENANCE PERSONNEL ON ALL OPERATING PROCEDURES.
- PLUMBING FIXTURES SHALL BE AS SCHEDULED ON THE DRAWINGS AND SHALL BE COMPLETE WITH ALL NECESSARY FITTINGS, ANGLES, STOPS, CARRIERS, ETC., AS REQUIRED FOR A COMPLETE SERVICE.
- THE PLUMBING CONTRACTOR SHALL OBTAIN ALL PERMITS, PAY ALL FEES, ETC., AS NECESSARY TO COMPLETE THE PLUMBING WORK, EXCEPT THE FINAL DEPOSITS FOR PERMANENT SERVICE.
- CONTRACTOR SHALL RUN ALL WATER LINES ABOVE CEILING. ALL WATER PIPING SHALL BE INSULATED W/ ARMBROSTRONG ARMAFLEX 1/2" THICK INSULATION UP THRU 3/4" IN SIZE. PROVIDE 3/4" THICK INSULATION 1" SIZE PIPE AND ABOVE. TAPE ALL JOINTS.
- ALL SOIL, WASTE, AND VENT PIPING INSIDE BUILDING AND UNDER SLAB SHALL BE CAST IRON PIPING SHALL BE IN ACCORDANCE WITH ALL APPLICABLE CODES AND REGULATIONS.
- PROVIDE HOT AND COLD WATER TO EACH FIXTURE AS REQUIRED WITH SHUT-OFF VALVES.
- HOT WATER TO HAND WASHING FACILITIES NOT TO EXCEED 105° F.
- PROVIDE INDIRECT WASTE CONNECTORS AND VACUUM BREAKERS AS REQUIRED BY STATE LAWS.
- VACUUM BREAKERS ARE REQUIRED ON JANITOR SINKS.
- ALL ROOF PENETRATIONS BY PLUMBER ARE TO BE FLASHED AND WEATHER-PROOFED BY HIM AND SHALL BE GROUPED FOR MINIMUM PENETRATIONS.
- ALL LAVATORIES SHALL BE INSTALLED WITH INSULATION WRAP ON ALL EXPOSED P-TRAP DRAIN LINES AND HOT AND COLD WATER SUPPLY LINES. USE "HAND-LAY-GUARD" BY "TREBRO" (205-875-2868) OR EQUAL.
- CONTRACTOR SHALL VERIFY DOMESTIC AND GAS PRESSURE TO CHECK FOR ADEQUATE PIPE SIZE AT WATER AND GAS SERVICE ENTRY.
- SLOPE FLOOR 1/8" PER FOOT IN A 3' DIAMETER AREA AROUND ALL FLOOR DRAINS. REFER TO PLANS FOR LOCATIONS.
- ALL HORIZONTAL DRAINAGE PIPING 3" AND SMALLER SHALL BE SLOPED 1/4" PER FOOT, 4" AND LARGER SHALL BE SLOPED 1/8" PER FOOT.

SS	SANITARY SEWER LINE	GV	GLOBE VALVE
EX-SS	EXISTING SANITARY SEWER LINE	GV	GATE VALVE
V	PLUMBING VENT LINE	SV	SOLENOID VALVE
EX-V	EXISTING PLUMBING VENT LINE	BV	BALL VALVE
CWS	COLD WATER SUPPLY	MV	MIXING VALVE
EX-CWS	EXISTING COLD WATER SUPPLY	CSV	CIRCUIT SETTER VALVE
HWS	HOT WATER SUPPLY	U	UNION
EX-HWS	EXISTING HOT WATER SUPPLY	RD	ROOF DRAIN / UNDERGROUND ROOF DRAIN
HWR	HOT WATER RETURN	CD	CONDENSATE DRAIN
PSIG	PSI NATURAL GAS LINE	FPWH	FREEZE PROOF WALL HYDRANT
6 OZ.G	6 OZ. NATURAL GAS LINE	HB	HOSE BIBB
EX.G	EXISTING NATURAL GAS LINE	FS	FLOOR SINK
GW	GREASE WASTE LINE	FD	FLOOR DRAIN
LW	LINT WASTE LINE	FCO	FLOOR CLEANOUT
TEE - TURNED DOWN		MCO	WALL CLEANOUT
TEE - TURNED UP		COTG	CLEANOUT TO GRADE
ELBON - TURNED DOWN		TKCO	TWO-WAY CLEANOUT
ELBON - TURNED UP		SP	SEAL PENETRATION AT RATED WALL



3 Instantaneous Water Heater
 No Scale

1 Plumbing & Water Piping Floor Plan
 1/8"=1'-0"